

The Catalyst

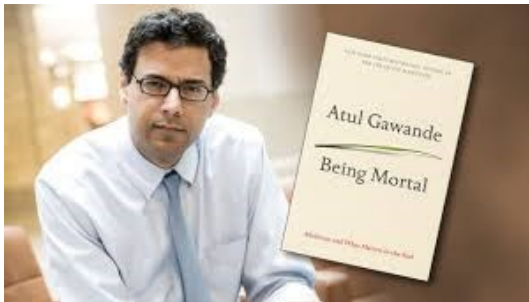
Channing Memorial Church Monthly Newsletter
February 2023



FROM THE LEARNING CENTER



Since winter is upon us and folks might be less inclined to venture out on a cold evening, "TLC" will be working on bringing you some programs in that post-Fellowship time slot, when coffee is still hot and the Parish Hall is nice and cozy. We'll provide some lunch-y snacks. Your \$5 suggested donation will help to cover tech supply costs – we have just mounted some speakers to enhance the projector's sound for all who use it. Hope to see you!



Dr. Atul Gawande on

"The True Issues at the End of Life"

Sunday, Feb. 5, at 11:45 AM

A 26-minute video presentation, followed by Q & A.

Discussion will be guided by Joy Benson, Hospice Volunteer Coordinator at Visiting Nurse Home & Hospice.

You may have read Dr. Gawande's well-known and inspiring book, "Being Mortal". No doubt you have thoughts on what quality of life means to you!

Joy tells us that discussion is typically lively after she does one of these programs. She'll bring some related handouts.

A message from TLC: Your contributions enable us to bring in outside speakers and to provide refreshments at our programs. Please consider donating to TLC in the "Give" section of the Channing website!

Channing Memorial Church

A Welcoming Congregation, welcoming & affirming all people

A Green Congregation, committed to protecting the environment

Phone: 401-846-0643/ Email: office@channingchurch.org

135 Pelham Street, Newport, Rhode Island

SUNDAY WORSHIP AT 10:00AM IN THE SANCTUARY

Services are live streamed on the
[CHANNING YOU TUBE](#)

[CHANNEL](#) and available for viewing afterwards.

Sunday, February 5

Trust-A Building Block of Life

Rev. Bill Zelazny

The Rev. Justin Schroeder once said, "We know that DNA is the building block for all life. But more than just DNA is needed to build and sustain a fruitful, healthy, and vibrant human life. Trust -- trust in ourselves, in other people, in institutions -- is a foundation all building upon which we can build a life strong enough to carry us through heartbreak and setback." This Sunday, Bill will explore the several aspects of trust and how each is part of the foundation of a good life.

Sunday, February 12

Being Loving Can Be Hard

Rev. Bill Zelazny

Pulitzer Prize winner poet, Franz Wright, wrote in his collection of poems *Walking to Martha's Vineyard*, "How is it that I didn't spend my whole life being happy, loving other human beings' faces." His question reminds us of the human tendency to fall short of our highest aspirations, especially when it comes to love. Being loving can be hard, and we often fail to do it well. On this Sunday before Valentine's Day, we'll take a stroll through the various scenes of love in our lives.

All are invited to a Fika Fellowship after church, more info on next page!



**Fika Fellowship
After church Feb. 12th**

The SOCIAL ACTION Team would like to invite you for a Fika on **Sunday, February 12th after church in the Parish Hall. What is a Fika?** In the Swedish tradition, a Fika is a moment to take a break for a cup of coffee with a delicious baked good to go with it. More than just a coffee break, a Fika is a magical time to slow down and spend time together. **We will be providing traditional Swedish baked goods and collecting donations for the UUA disaster relief fund, our February Share the Plate recipient.** As we approach Valentines Day, we believe that supporting disaster relief is a loving thing to do. Global warming has resulted in an increase in the severity of storms, from floods, fires, drought to hurricanes. The UUA, by establishing this fund, can accept applications at the time these disasters occur, most recently the severe storms, flooding and mudslides in California. We hope you will join us on the 12th for wonderful fellowship and tasty treats supporting this important cause. The raffle winner will also be drawn for the coffee basket for those who completed our online SAC survey.

**Sunday, February 19
A Magnifying Glass on a
Dangerous Idea-Christian
Nationalism**

Rev. Bill Zelazny

We have just finished a round of elections where the idea of Christian Nationalism was part of the political discussion. Christian nationalism is the notion that America is a nation by and for Christians alone. It is a contributing ideology in the religious right’s misuse of religious liberty as a rationale for circumventing laws and regulations. It leads to discrimination, or calls to discriminate, and at times use violence, against religious minorities and the nonreligious. It is a dangerous, non-democratic, political and social phenomenon. This Sunday, Bill will talk about this concept and its implications for everyone, especially people who identify themselves as theologically liberal.

**ELKS’ PARKING FOR
SUNDAY MORNING
WORSHIP**



Channing Members may park in the Elks’ parking lot from **9:00am-12:00pm on**

Sunday mornings while attending Sunday Services. **Please place the bright orange parking permit on your dashboard where it is clearly visible.** Permits are located on the table to the right as you enter the church.

**Sunday, February 26
Talking with Each Other
Members of CMC**

The Worship Committee is working to create a service that we will do something that Channing people really like – provide an opportunity to talk with each other. This Sunday we will hear about life events from congregation members that were significant to them or taught them a lesson or gave them new insight. Come to the service to learn more about your friends and congregation neighbors.

AN INVITATION TO PARTICIPATE!

Do you have an insight about life? A profound experience that got you thinking in a new way? A humorous episode that came just at the right time? A very meaningful event in your life that you fondly, or not so fondly, recall today years later? Don’t be afraid to share your story with the congregation. **Contact Rev. Bill (minister@channing.org) or Judie Porter for more information and to volunteer to be a speaker**



SUNDAY CHIMING

- Feb 5:** Janna Pederson
- Feb 12:** Linda Beall
- Feb 19:** Janna Pederson
- Feb 26:** Jim Freess



**PRESIDENTS
MESSAGE**

Happy February all! What a busy time the next couple of months will be. We have another Coffee House coming up, Interweave has reconvened and is planning an initial Pot Luck at the end of February, our Born This Way Prom will be happening in April, Channing member and friends forums have been scheduled for early March and April to discuss the future of our Church, Social Action is busy as usual serving the needs of the our Community, Caregiving remains busy as we go through our various aging crises, TLC has been preparing new and interesting offerings, Winter/Spring Chalice Circle groups have reconvened, the Pledge Drive is close at hand, and the crazy weather, and bulbs poking their greens up *in January*, remind us that green earth efforts are as important now as they have ever been. So how is that for a list *and I am quite sure I have missed something!*

In my message this month I mainly want to reinforce that we are here today, and, in this moment, we are vital and living fully. And so, my friends, what more do we need! We are not going anywhere if we can help it and if we can't help it then maybe it is as it should be and the Universe is

moving on as it does, in support of the circle of life! We are here for the ride in this place and time, so let's all continue to pitch in and make our time count! We each have unique and wonderful gifts, let's celebrate and use them to best of our abilities and worry not, fear not, and continue to have faith that we will have what we need to live as best we can in our community in this moment in time. Thank you each and all for your continued service and financial support to our Church. I look forward to a mild winter and active and fruitful spring. Keep your eyes peeled on the weekly announcements ... they will be chock full of information about upcoming events. And as always, my wish for you ...

May you be healthy, may you be safe, may you be happy, and may you live with as much ease as is possible in this place and time.

Have a good month all,
Ginny



**Church Office Hours:
Tuesday, Thursday &
Friday 10:00am-3:30pm**



**BLACK HISTORY
ASSEMBLY**

**Friday, February 17, 9:30am,
Rogers High School**

The 52nd Annual Rev Robert Williams National Black History Month Assembly will be held at Rogers High School on Friday Feb. 17th at 9:30 AM. This event is co-sponsored by Channing Memorial Church and Community Baptist Church.

Channing members are invited to attend the assembly which will be held in the school cafeteria this year due to construction of the new high school and elimination of the auditorium.

Parking is in the back of the high school and attendees are encouraged to carpool.

Due to the limited space, this year we need an attendance number. If you plan to attend, please contact Judith Porter to sign up for both the assembly and the brunch afterward in the Colonial Dining Room.



CAREGIVING UPDATE

Many thanks to Joy Benson and Mary Benson, who handled Caregiving coordinator duties during January!

There is not a lot of news to share this month, but we are happy to know that several Channing members who have been mentioned in most recent Catalyst columns are recovering well from surgeries and treatments. Anna Smith has settled in happily to her new apartment at Blenheim, and Janet and Tom Cook have also been staying at Blenheim as Janet recovers from cataract surgery. They are due to return home around February 1.

Our Channing community was saddened to learn of the death of former church member Anne Kellerman, who passed away peacefully at her home in Bristol. Anne was a good friend to many and will be missed.

The following is a note received by Caregiving from Irene Glasser in thanks for recent assistance:

"We would like to thank the Channing community for the tremendous support that they have extended to me and to my husband Morty during our recent injuries. Your dinners, walks with us, emotional support and many offers to help us are so

appreciated. We hope to be able to be helpful to you as well when we are recovered. Thank you all for your many mitzvahs. Thank you to Tom Beall for the tremendous coordination of dinners for us. We would also like to thank Sally Hanchett, Reverend Bill, JoAnn Rosemont, Joan Dermody, Barbara Baum, Tom and Linda Beall, Margaret Baker and Charles Roberts, Tom Howard and Renee Soto, Olivia Verity, Maryellen Doherty, Judy Byrnes, Nickie and George Kates, Mary Alice Smith, Joy Benson, Julie Herrick, Christine Ariel, Janna and Tom Pederson, Laura and David Pedrick and Cynthia Skelton. Wishing everyone in the Channing community health and peace for the New Year!"

We also received a note of appreciation from the Hampton family after Don's memorial service:

Dear Channing Church, Board and Congregation,

We were deeply moved to see many dear friends from our days as members of Channing. Thanks to all who came, to those who sent cards and notes, and who shared some of Don's life and the early life of our children, Bruce, Sue, and Scott.

With love, Sylvia and the family of Don Hampton

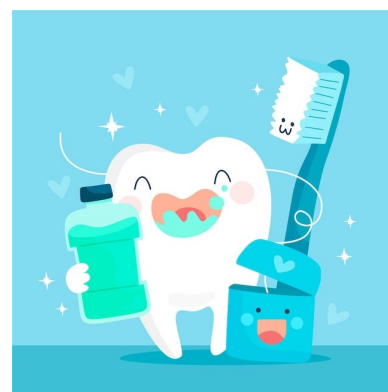
Please remember that the Channing Caregiving team is always available to offer support to anyone who is feeling isolated or needs a bit of cheer. If you know of anyone who could use a friendly phone call, a meal offering, a ride to an appointment, or some other assistance, we welcome hearing from you.



The February coordinators are Rachel Balaban and John Burnham.

Please contact either of these individuals, or Caregiving co-leaders Sally Hanchett and JoAnn Rosemont, with any Caregiving news or needs this month.

~Linda Beall,
for Channing Caregiving



THE SHARING LOCKER

The Sharing Locker donates toiletries and cleaning supplies through the MLK Center to those in our community with financial limitations and which can not be purchased with food stamps. All items are accepted and can be placed in the collection bucket in the parish hall. **For February we would like to recognize dental health month and are requesting tooth paste, floss, toothbrushes and mouth wash.** Items can be dropped in the box in parish hall or with food collection the second Sunday.

SOCIAL ACTION & ANNOUNCEMENTS



ECO BITS & TIPS

Expanding Outward from the Personal: Climate Ride this April

Last month, and the start of a new year, I chose to write about personal choice and responsibility. From having solar panels installed on your roof to composting of leaves and food waste. By themselves, these choices have an infinitesimal effect on reducing carbon emissions worldwide. So why even bother?

Humans are naturally, evolutionarily predisposed to exist in family and small groups. Child rearing, teaching, worshiping, hunting and gathering to growing food, all require collaboration and cooperation. Families, tribes, city and nation states needed to band together to survive, defend themselves and problem solve. They *shared* values: positive ones included public education for all; and, of course, negative ones included slavery and human exploitation. The importance of family and small group collaboration explain why I was drawn to Climate Ride: **our chosen ride this year is early, in late April in Virginia.** While high

fundraising totals, to minimize human-caused climate change, is an important goal for me, I equally believe that drawing more people to the cause is **just** as important. For instance, the Maine ride in 2021 (and my first), had an average donation of \$89. And last year's western New York ride, aside from the Algorand Foundation match (doubling my total) had an average donation match of only \$67. In both cases I exceeded my goals by at least 25%, with the average donation decreasing with each ride.

Philosophically, I view the Climate Ride response as both shared and beneficial. The problems with our climate require maximum resources and also as broad a support as possible. And, it's not as if this is a "one and done" issue. Global environmental issues can effectively be solved as we've learned with the near closing of the Ozone Hole. Research, education and broad policy support, is accomplished with this funding. Your support in the past, currently and into the future are necessary!

As an **extra bonus**, for the first six donors who contribute \$50 or more, you will/can receive a bipartisan bumper sticker that reads "**Fixing Climate Change Creates Jobs**" effectively combining red and blue backgrounds. (One can be seen on the back of our two cars.) I am all for subliminal messaging and happier to have eight of these bumper stickers traveling around Aquidneck Island rather the two currently

on Gaspard driven cars. You must commit to actually placing it on a car bumper though! **Here is the link:** www.support.climateride.org where there is an index to input a name. Paper forms can also be downloaded and printed here.

One other newsworthy issue I will write about next month is the World Economic Forum being held now in Davos, Switzerland. How to deal with Climate Change was a major theme taken on by the organizers.

~Craig Gaspard, for SAC



MUSIC AND POETRY OPEN-MIC AT CHANNING COFFEEHOUSE

**Saturday, February 25,
7:00pm, Parish Hall**

We're going to go mainly acoustic and invite you to bring a song to play, sing along, or share a poem. Coffee and tea are served, and you're also invited to bring a dessert to share or a donation (\$5 or more suggested) to support the church.

Questions? Contact the facilitator, John Burnham, at coffeehouse@channingchurch.org.

February 2023 Calendar

Sun	Mon	Tue	Wed	Thu	Fri	Sat
			1	2	3 Sobriety 1st 7pm-PH	4
5 Worship 10 am-S TLC: Dr. Atul Gawande on "The True Issues at the End of Life" 11:45am-PH	6 TLC 7pm-Zoom	7	8	9	10 Sobriety 1st 7pm-PH	11
12 Worship 10 am-S <i>Second Sunday</i> <i>Nonperishable Food</i> <i>Collection</i> Fika Fellowship after Church in the Parish Hall	13 Finance Comm. 7pm-Zoom	14	15	16 Board of Trustees 7:00pm-Zoom	17 Black History Assembly 9:30am-Rogers High School Sobriety 1st 7pm-PH	18 Circle of Concerns & Joys 9am-Zoom
19 Worship 10 am-S	20 Catalyst Deadline Presidents' Day Community Meal 5pm, Parish Hall Worship Comm. 5:30pm~Zoom	21	22	23	24 Sobriety 1st 7pm-PH	25 Music and Poetry Open-Mic at Channing Coffeeshouse 7:00pm-PH
26 Worship 10 am-S Interweave Potluck 5:30pm-PH	27	28				

Abbreviations: Sanctuary-S, Parish Hall-PH, Channing House-CH

**Please contact the Church Office to schedule all activities & events—
846-0643 or e-mail us at office@channingchurch.org.**

Church Office Hours: Tuesday, Thursday & Friday 10:00am-3:30pm